

Certificate of Analysis

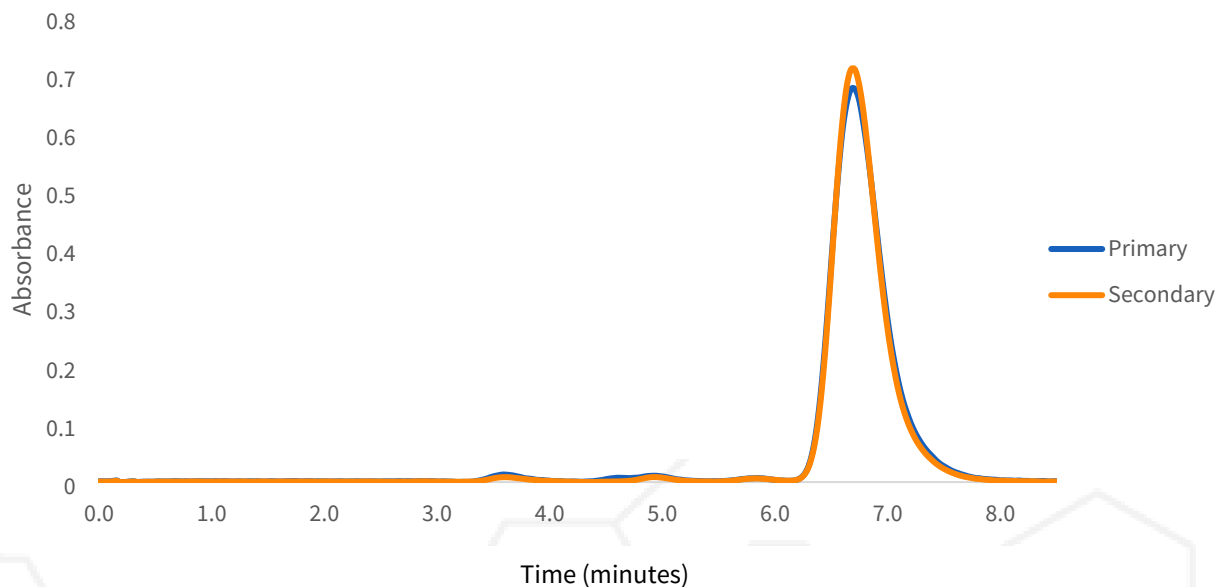
Date:	2025-01-23 21:54:46 -06:00	Cultivar:	Banana Cream Jealousy
Serial:	LL030539	Moisture:	0.0%
LightLab	LAB	Col Tests Remaining:	6
Operator:	MF	CoA Revision:	1
Sample ID:	DGW_106	Calibration Exp:	2025-03-14
Method:	LightLab HPLC	Product:	Deep Gap Wellness
Test Type:	THCA Flower/Sprayed Flower	SKU:	THC-A
Weight / Volume:	0.433 g	Batch:	
Solvent:	20 ml		
Temperature:	21.0 °C		
Notes:			

Cannabinoid Profile

Analyte	%	LOQ
THC-A	25.3	0.23
Δ9-THC	ND	0.18
CBD-A	ND	0.69
CBG-A	ND	0.69
CBD/CBG	ND	0.23
CBN	ND	0.69
CBC-A	1.2	0.23
CBC	ND	0.69
Δ8-THC*	ND	1.8
Δ10-THC	ND	0.69
THCV-A	ND	0.69
THCV	ND	0.69
Δ9-THC-O	ND	0.69
Δ8-THC-O	1.2	0.69
HHC	ND	0.69
Δ9-THCP	ND	0.69
Terpenes	ND	
Total THC	22.2	
Total Cannabinoids	27.7	

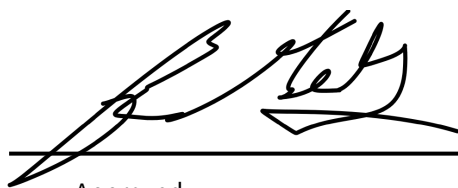
ND = Not Detected; n/a = Not Analyzed; LOQ = Limit of Quantification; Total THC = (0.877 x THC-A) + Δ9-THC; Total CBD = (0.877 x CBD-A) + CBD. * Δ8THC has lower precision and higher detection limit than other cannabinoids.

Chromatogram



Change History

Date	User	Action
2025-01-23 21:54:46 -06:00		Test Recorded
2025-03-08 02:52:02 -06:00		Generated a CoA (revision 1)



Approved

March 8, 2025

Date



Scan for Authenticity

The signatory confirms that the Operator has performed the sample preparation according to the LightLab User's Guide. This report is for quality assurance purposes only. These results relate only to the sample included on this report. Orange Photonics makes no claims as to the efficacy, safety, or risks associated with any detected or non-detected level of any compounds reported herein. Orange Photonics makes no claims regarding the adherence to sample preparation guidelines, by the operator, as outlined in the LightLab User's Guide.