

## Certificate of Analysis

Date: 2024-07-29 23:02:01 -05:00  
 Serial: LL030539  
 LightLab: Smarti Plantz Lab  
 Operator: SLEE  
 Sample ID: C135  
 Method: LightLab HPLC  
 Test Type: Hemp Compliance  
 Weight / Volume: 0.5 g  
 Solvent: 20 ml  
 Temperature: 24.1 °C  
 Notes:  
 2x Dilution Correction

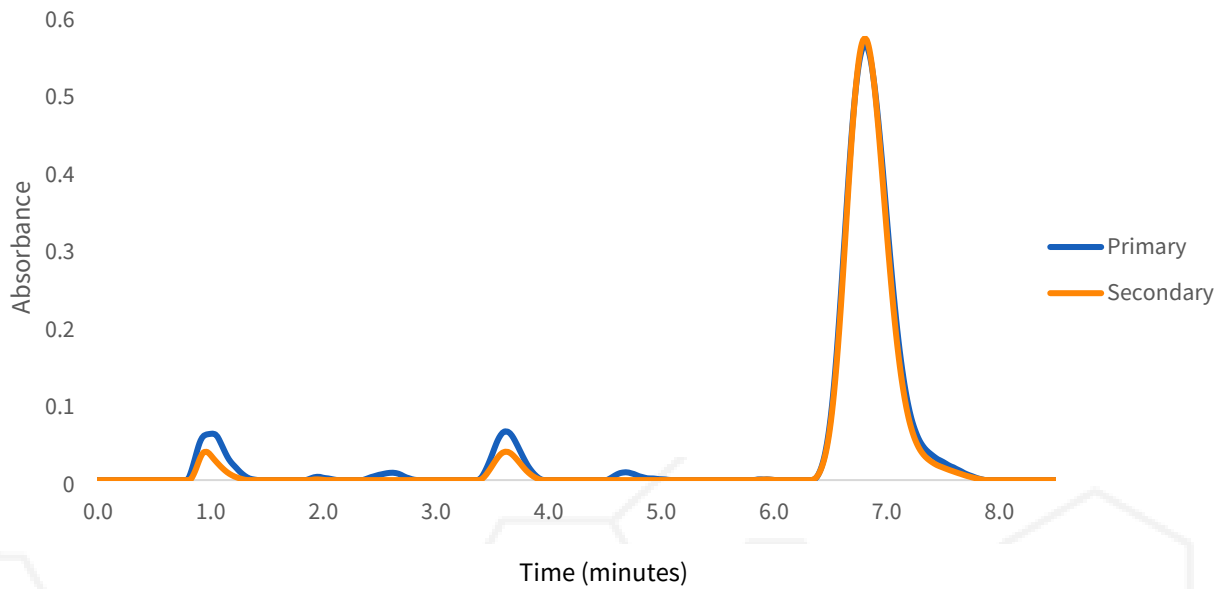
Cultivar: Sugar Cookie  
 Moisture: 0.0%  
 Col Tests Remaining: 11  
 CoA Revision: 0  
 Calibration Exp: 2025-03-14  
 Product: Deep Gap Wellness  
 SKU: THC-A  
 Batch:

### Cannabinoid Profile

Analyte	%	LOQ
THC-A	26.4	0.050
Δ9-THC	0.20	0.050
<b>Total THC</b>	<b>23.2</b>	

ND = Not Detected; n/a = Not Analyzed; LOQ = Limit of Quantification; Total THC = (0.877 x THC-A) + Δ9-THC; Total CBD = (0.877 x CBD-A) + CBD.

# Chromatogram



# Change History

Date	User	Action
2024-07-29 23:02:01 -05:00		Test Recorded
2024-07-30 03:19:39 -05:00		Generated a CoA (revision 0)

July 30, 2024



Scan for Authenticity

Approved

Date

The signatory confirms that the Operator has performed the sample preparation according to the LightLab User's Guide. This report is for quality assurance purposes only. These results relate only to the sample included on this report. Orange Photonics makes no claims as to the efficacy, safety, or risks associated with any detected or non-detected level of any compounds reported herein. Orange Photonics makes no claims regarding the adherence to sample preparation guidelines, by the operator, as outlined in the LightLab User's Guide.

## Certificate of Analysis

Date: 2024-07-27 21:51:39 -05:00  
 Serial: LL030572  
 LightLab: Smarti Plantz  
 Operator: SLEE  
 Sample ID: C135  
 Method: LightLab HPLC  
 Test Type: Plant  
 Weight / Volume: 0.309 g  
 Solvent: 30 ml  
 Temperature: 24.9 °C  
 Notes:

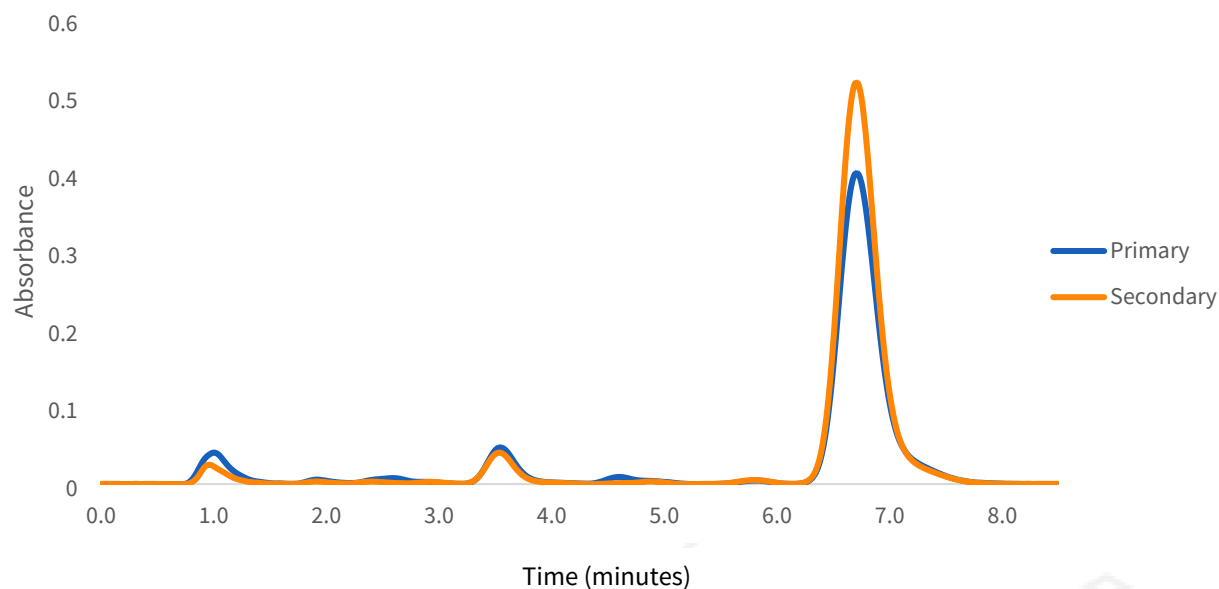
Cultivar: Sugar Cookie  
 Moisture: 0.0%  
 Col Tests Remaining: 9  
 CoA Revision: 0  
 Calibration Exp: 2025-03-08  
 Product: Deep Gap Wellness  
 SKU: THC-A  
 Batch:

### Cannabinoid Profile

Analyte	%	LOQ
THC-A	20.7	0.49
Δ9-THC	ND	0.49
CBD-A	ND	0.49
CBD	ND	0.49
CBG-A	0.73	0.49
CBG	ND	0.49
CBN-A	ND	0.49
CBN	ND	0.49
CBC-A	0.55	0.49
CBC	ND	0.49
Δ8-THC*	ND	3.9
THCV-A	ND	0.49
THCV	ND	0.49
Terpenes	Low	
<b>Total THC</b>	<b>18.1</b>	
<b>Total CBD</b>	<b>ND</b>	
<b>Total Cannabinoids</b>	<b>21.9</b>	

ND = Not Detected; n/a = Not Analyzed; LOQ = Limit of Quantification; Total THC = (0.877 x THC-A) + Δ9-THC; Total CBD = (0.877 x CBD-A) + CBD. \* Δ8THC has lower precision and higher detection limit than other cannabinoids.

## Chromatogram



## Change History

Date	User	Action
2024-07-27 21:51:39 -05:00		Test Recorded
2024-07-28 03:22:53 -05:00		Generated a CoA (revision 0)

July 28, 2024



Scan for Authenticity

Approved

Date

The signatory confirms that the Operator has performed the sample preparation according to the LightLab User's Guide. This report is for quality assurance purposes only. These results relate only to the sample included on this report. Orange Photonics makes no claims as to the efficacy, safety, or risks associated with any detected or non-detected level of any compounds reported herein. Orange Photonics makes no claims regarding the adherence to sample preparation guidelines, by the operator, as outlined in the LightLab User's Guide.