

Certificate of Analysis

Date: 2024-07-30 00:12:41 -05:00
 Serial: LL030539
 LightLab: Smarti Plantz Lab
 Operator: SLEE
 Sample ID: C134
 Method: LightLab HPLC
 Test Type: Hemp Compliance
 Weight / Volume: 0.5 g
 Solvent: 20 ml
 Temperature: 24.3 °C
 Notes:
 2x Dilution Correction

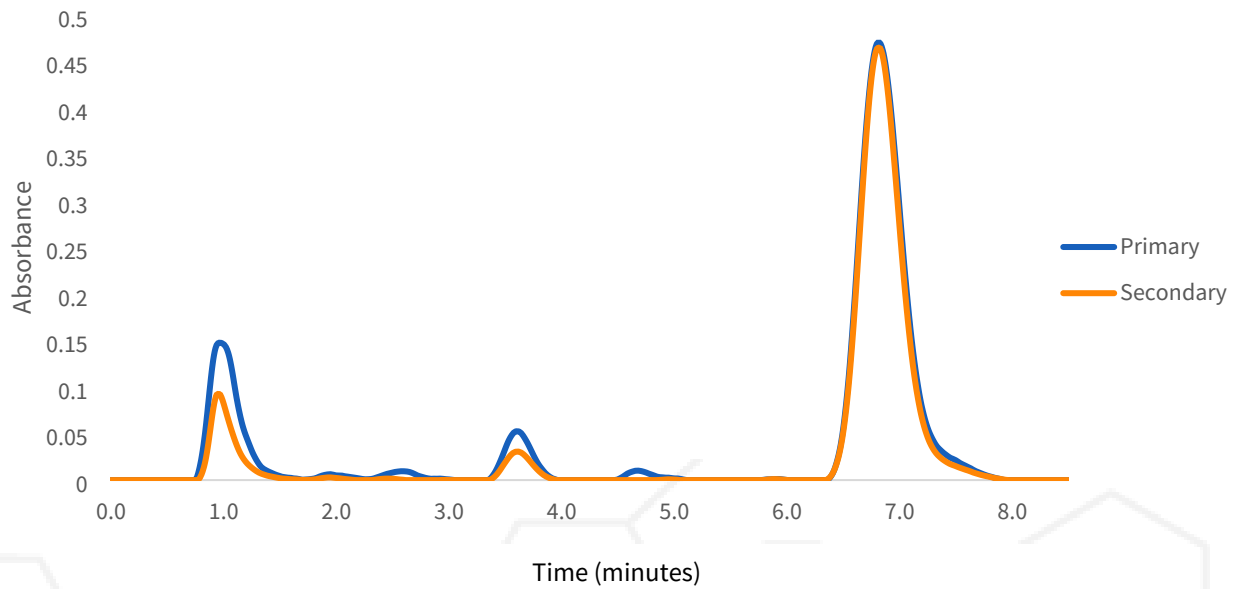
Cultivar: Red Pop
 Moisture: 0.0%
 Col Tests Remaining: 9
 CoA Revision: 0
 Calibration Exp: 2025-03-14
 Product: Deep Gap Wellness
 SKU: THC-A
 Batch:

Cannabinoid Profile

Analyte	%	LOQ
THC-A	21.0	0.050
Δ9-THC	0.24	0.050
Total THC	18.6	

ND = Not Detected; n/a = Not Analyzed; LOQ = Limit of Quantification; Total THC = (0.877 x THC-A) + Δ9-THC; Total CBD = (0.877 x CBD-A) + CBD.

Chromatogram



Change History

Date	User	Action
2024-07-30 00:12:41 -05:00		Test Recorded
2024-07-30 03:18:42 -05:00	SS	Generated a CoA (revision 0)

July 30, 2024



Scan for Authenticity

Approved

Date

The signatory confirms that the Operator has performed the sample preparation according to the LightLab User's Guide. This report is for quality assurance purposes only. These results relate only to the sample included on this report. Orange Photonics makes no claims as to the efficacy, safety, or risks associated with any detected or non-detected level of any compounds reported herein. Orange Photonics makes no claims regarding the adherence to sample preparation guidelines, by the operator, as outlined in the LightLab User's Guide.

Certificate of Analysis

Date: 2024-07-28 00:36:59 -05:00
 Serial: LL030539
 LightLab: Smarti Plantz Lab
 Operator: SLEE
 Sample ID: C134
 Method: LightLab HPLC
 Test Type: Plant
 Weight / Volume: 0.3 g
 Solvent: 30 ml
 Temperature: 26.6 °C
 Notes:
 DGW

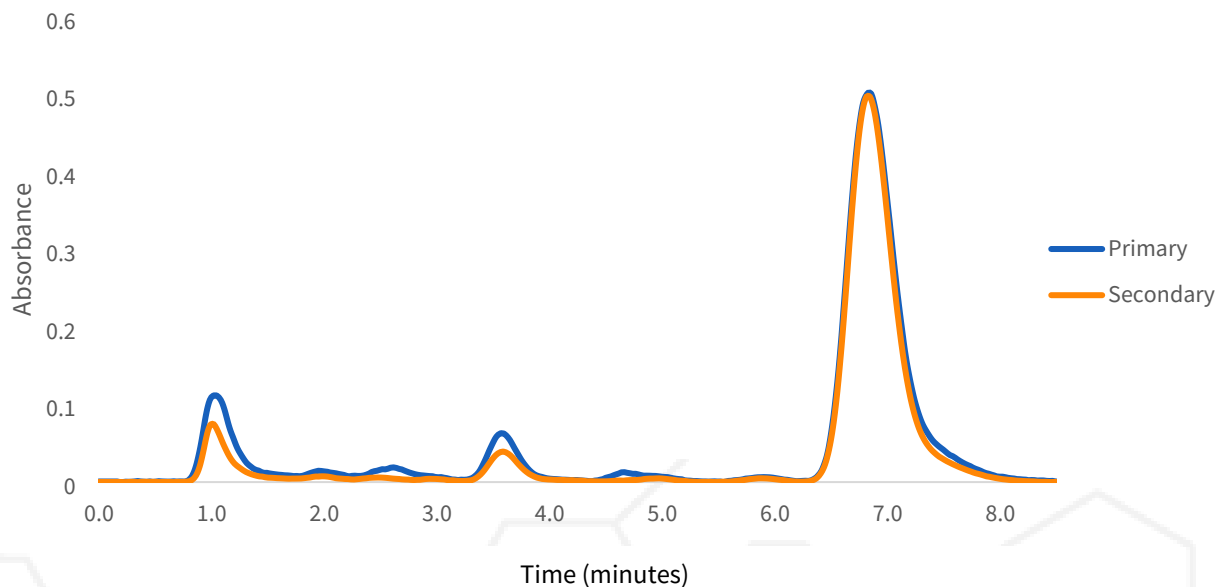
Cultivar: Red Pop
 Moisture: 0.0%
 Col Tests Remaining: 14
 CoA Revision: 1
 Calibration Exp: 2025-03-14
 Product: Deep Gap Wellness
 SKU: THC-A
 Batch:

Cannabinoid Profile

Analyte	%	LOQ
THC-A	27.1	0.50
Δ9-THC	ND	0.50
CBD-A	ND	0.50
CBD	ND	0.50
CBG-A	1.0	0.50
CBG	0.50	0.50
CBN-A	ND	0.50
CBN	ND	0.50
CBC-A	1.0	0.50
CBC	ND	0.50
Δ8-THC*	ND	4.0
THCV-A	ND	0.50
THCV	ND	0.50
Terpenes	Low	
Total THC	23.8	
Total CBD	ND	
Total Cannabinoids	29.7	

ND = Not Detected; n/a = Not Analyzed; LOQ = Limit of Quantification; Total THC = (0.877 x THC-A) + Δ9-THC; Total CBD = (0.877 x CBD-A) + CBD. * Δ8THC has lower precision and higher detection limit than other cannabinoids.

Chromatogram



Change History

Date	User	Action
2024-07-28 00:36:59 -05:00		Test Recorded
2024-07-28 02:16:01 -05:00		Generated a CoA (revision 1)

July 28, 2024

Approved

Date



Scan for Authenticity

The signatory confirms that the Operator has performed the sample preparation according to the LightLab User's Guide. This report is for quality assurance purposes only. These results relate only to the sample included on this report. Orange Photonics makes no claims as to the efficacy, safety, or risks associated with any detected or non-detected level of any compounds reported herein. Orange Photonics makes no claims regarding the adherence to sample preparation guidelines, by the operator, as outlined in the LightLab User's Guide.