

Certificate of Analysis

Date: 2024-07-30 00:57:05 -05:00
 Serial: LL030539
 LightLab: Smarti Plantz Lab
 Operator: SLEE
 Sample ID: C132
 Method: LightLab HPLC
 Test Type: Hemp Compliance
 Weight / Volume: 0.55 g
 Solvent: 20 ml
 Temperature: 24.9 °C
 Notes:
 2x Dilution Correction

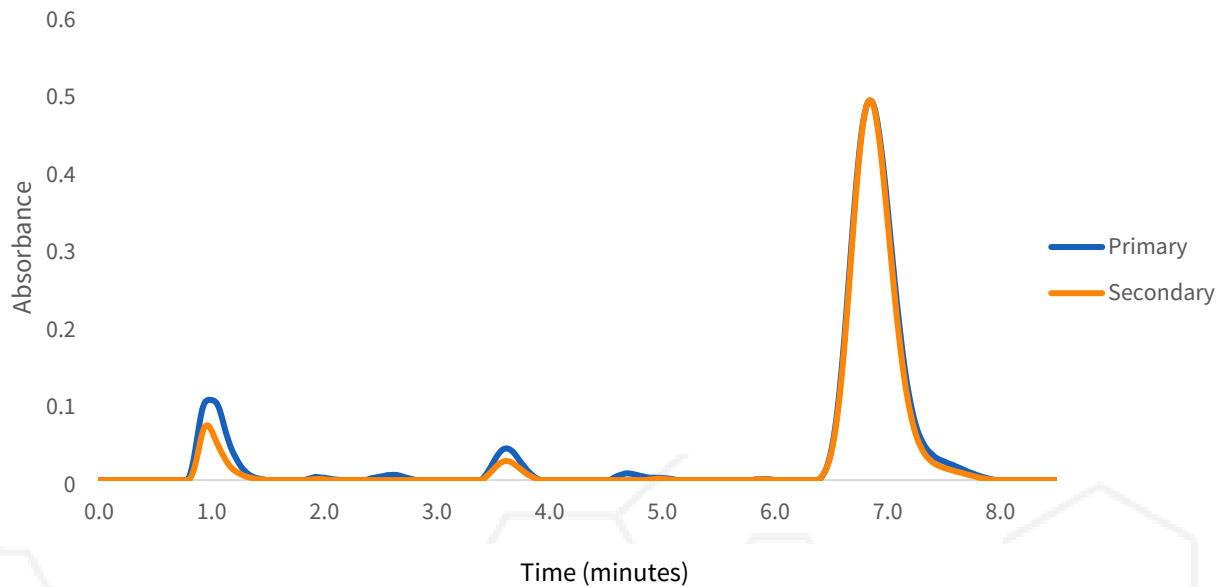
Cultivar: Black Cherry Gelato
 Moisture: 0.0%
 Col Tests Remaining: 7
 CoA Revision: 0
 Calibration Exp: 2025-03-14
 Product: Deep Gap Wellness
 SKU: THC-A
 Batch:

Cannabinoid Profile

Analyte	%	LOQ
THC-A	19.8	0.045
Δ9-THC	ND	0.045
Total THC	17.4	

ND = Not Detected; n/a = Not Analyzed; LOQ = Limit of Quantification; Total THC = (0.877 x THC-A) + Δ9-THC; Total CBD = (0.877 x CBD-A) + CBD.

Chromatogram



Change History

Date	User	Action
2024-07-30 00:57:05 -05:00		Test Recorded
2024-07-30 03:26:51 -05:00		Generated a CoA (revision 0)

July 30, 2024



Scan for Authenticity

Approved

Date

The signatory confirms that the Operator has performed the sample preparation according to the LightLab User's Guide. This report is for quality assurance purposes only. These results relate only to the sample included on this report. Orange Photonics makes no claims as to the efficacy, safety, or risks associated with any detected or non-detected level of any compounds reported herein. Orange Photonics makes no claims regarding the adherence to sample preparation guidelines, by the operator, as outlined in the LightLab User's Guide.

Certificate of Analysis

Date: 2024-07-25 01:02:58 -05:00
 Serial: LL030572
 LightLab: Smarti Plantz
 Operator: SLEE
 Sample ID: C132
 Method: LightLab HPLC
 Test Type: Plant
 Weight / Volume: 0.3 g
 Solvent: 30 ml
 Temperature: 22.4 °C
 Notes:

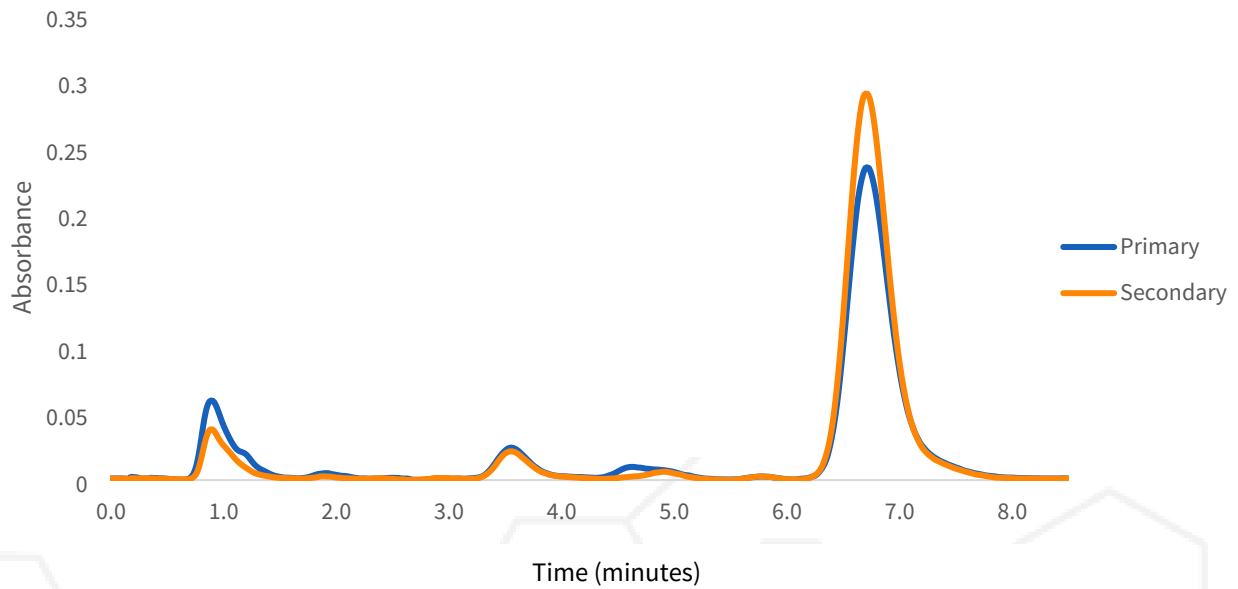
Cultivar: Black Cherry Gelato
 Moisture: 0.0%
 Col Tests Remaining: 19
 CoA Revision: 0
 Calibration Exp: 2025-03-08
 Product: Deep Gap Wellness
 SKU: THC-A
 Batch:

Cannabinoid Profile

Analyte	%	LOQ
THC-A	24.5	0.50
Δ9-THC	ND	0.50
CBD-A	ND	0.50
CBD	ND	0.50
CBG-A	ND	0.50
CBG	ND	0.50
CBN-A	ND	0.50
CBN	ND	0.50
CBC-A	0.50	0.50
CBC	ND	0.50
Δ8-THC*	ND	4.0
THCV-A	ND	0.50
THCV	ND	0.50
Terpenes	Low	
Total THC	22.8	
Total CBD	ND	
Total Cannabinoids	25.0	

ND = Not Detected; n/a = Not Analyzed; LOQ = Limit of Quantification; Total THC = (0.877 x THC-A) + Δ9-THC; Total CBD = (0.877 x CBD-A) + CBD. * Δ8THC has lower precision and higher detection limit than other cannabinoids.

Chromatogram



Change History

Date	User	Action
2024-07-25 01:02:58 -05:00		Test Recorded
2024-07-25 09:37:47 -05:00		Generated a CoA (revision 0)

July 25, 2024



Scan for Authenticity

Approved

Date

The signatory confirms that the Operator has performed the sample preparation according to the LightLab User's Guide. This report is for quality assurance purposes only. These results relate only to the sample included on this report. Orange Photonics makes no claims as to the efficacy, safety, or risks associated with any detected or non-detected level of any compounds reported herein. Orange Photonics makes no claims regarding the adherence to sample preparation guidelines, by the operator, as outlined in the LightLab User's Guide.