

Certificate of Analysis

Date: 2025-03-28 03:08:30 -05:00
 Serial: LL030539
 LightLab: LAB
 Operator: MF
 Sample ID: DGW_123
 Method: LightLab HPLC
 Test Type: THCA Flower/Sprayed Flower
 Weight / Volume: 0.366 g
 Solvent: 20 ml
 Temperature: 25.0 °C
 Notes:

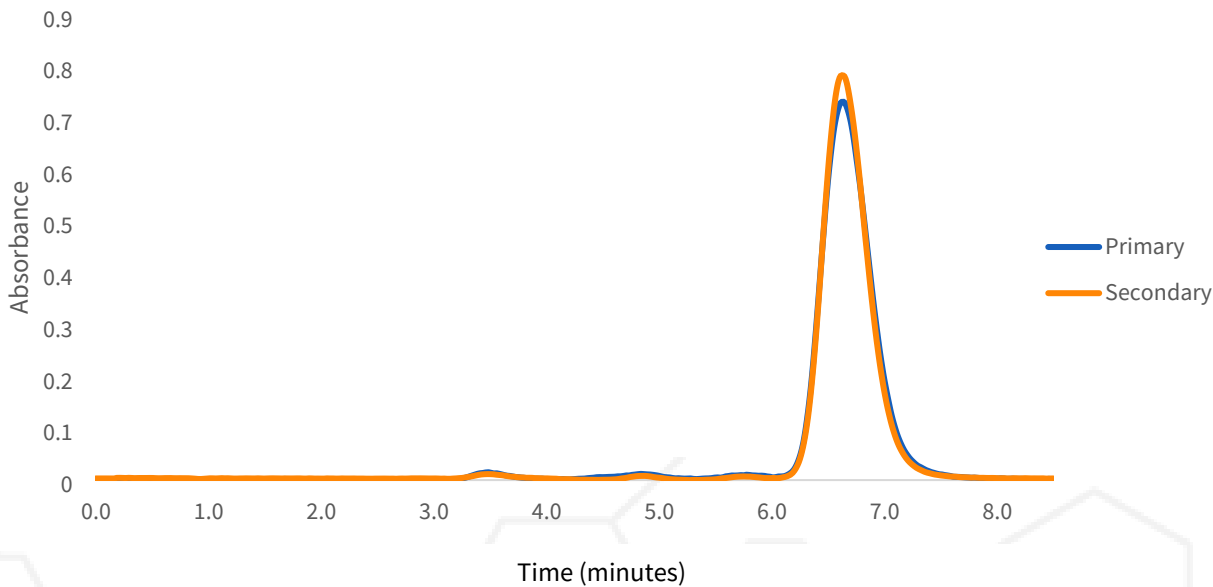
Cultivar: Banana Cream Cake
 Moisture: 0.0%
 Col Tests Remaining: 24
 CoA Revision: 0
 Calibration Exp: 2025-03-14
 Product: Deep Gap Wellness
 SKU: THC-A
 Batch:

Cannabinoid Profile

Analyte	%	LOQ
THC-A	27.9	0.27
Δ9-THC	ND	0.22
CBD-A	ND	0.82
CBG-A	ND	0.82
CBD/CBG	ND	0.27
CBN	ND	0.82
CBC-A	0.58	0.27
CBC	ND	0.82
Δ8-THC*	ND	2.2
Δ10-THC	ND	0.82
THCV-A	ND	0.82
THCV	ND	0.82
Δ9-THC-O	ND	0.82
Δ8-THC-O	ND	0.82
HHC	ND	0.82
Δ9-THCP	ND	0.82
Terpenes	ND	
Total THC	24.5	
Total Cannabinoids	28.5	

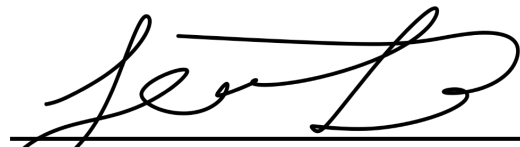
ND = Not Detected; n/a = Not Analyzed; LOQ = Limit of Quantification; Total THC = (0.877 x THC-A) + Δ9-THC; Total CBD = (0.877 x CBD-A) + CBD. * Δ8THC has lower precision and higher detection limit than other cannabinoids.

Chromatogram



Change History

Date	User	Action
2025-03-28 03:08:30 -05:00		Test Recorded
2025-03-28 03:23:46 -05:00		Generated a CoA (revision 0)



 Approved

March 28, 2025

 Date



Scan for Authenticity

The signatory confirms that the Operator has performed the sample preparation according to the LightLab User's Guide. This report is for quality assurance purposes only. These results relate only to the sample included on this report. Orange Photonics makes no claims as to the efficacy, safety, or risks associated with any detected or non-detected level of any compounds reported herein. Orange Photonics makes no claims regarding the adherence to sample preparation guidelines, by the operator, as outlined in the LightLab User's Guide.