

Certificate of Analysis

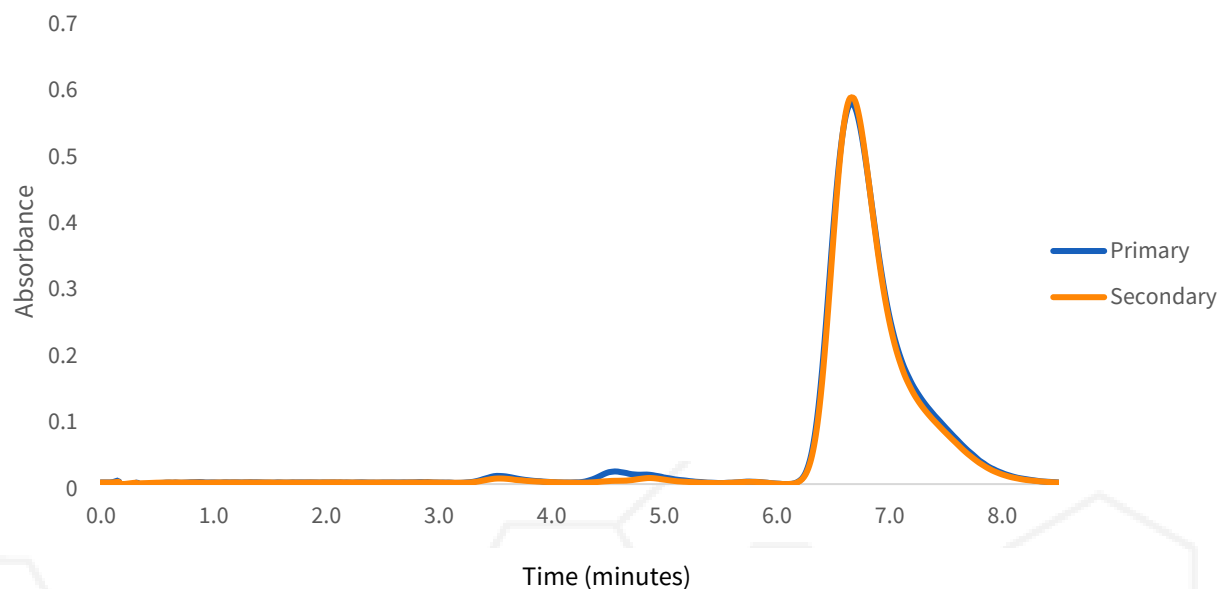
Date:	2024-12-24 22:01:48 -06:00	Cultivar:	Lemon Cherry Gelato
Serial:	LL030539	Moisture:	0.0%
LightLab	LAB	Col Tests Remaining:	22
Operator:	LS	CoA Revision:	0
Sample ID:	B	Calibration Exp:	2025-03-14
Method:	LightLab HPLC	Product:	Deep Gap Wellness
Test Type:	THCA Flower/Sprayed Flower	SKU:	
Weight / Volume:	0.405 g	Batch:	
Solvent:	20 ml		
Temperature:	22.9 °C		
Notes:	Deep Gap Wellness		

Cannabinoid Profile

Analyte	%	LOQ
THC-A	20.9	0.25
Δ9-THC	0.24	0.20
CBD-A	ND	0.74
CBG-A	ND	0.74
CBD/CBG	ND	0.25
CBN	ND	0.74
CBC-A	2.8	0.25
CBC	ND	0.74
Δ8-THC*	ND	2.0
Δ10-THC	ND	0.74
THCV-A	ND	0.74
THCV	ND	0.74
Δ9-THC-O	ND	0.74
Δ8-THC-O	ND	0.74
HHC	ND	0.74
Δ9-THCP	ND	0.74
Terpenes	ND	
Total THC	18.6	
Total Cannabinoids	23.9	

ND = Not Detected; n/a = Not Analyzed; LOQ = Limit of Quantification; Total THC = (0.877 x THC-A) + Δ9-THC; Total CBD = (0.877 x CBD-A) + CBD. * Δ8THC has lower precision and higher detection limit than other cannabinoids.

Chromatogram



Change History

Date	User	Action
2024-12-24 22:01:48 -06:00		Test Recorded
2024-12-27 15:33:59 -06:00		Generated a CoA (revision 0)

December 27, 2024



Scan for Authenticity

Approved

Date

The signatory confirms that the Operator has performed the sample preparation according to the LightLab User's Guide. This report is for quality assurance purposes only. These results relate only to the sample included on this report. Orange Photonics makes no claims as to the efficacy, safety, or risks associated with any detected or non-detected level of any compounds reported herein. Orange Photonics makes no claims regarding the adherence to sample preparation guidelines, by the operator, as outlined in the LightLab User's Guide.